

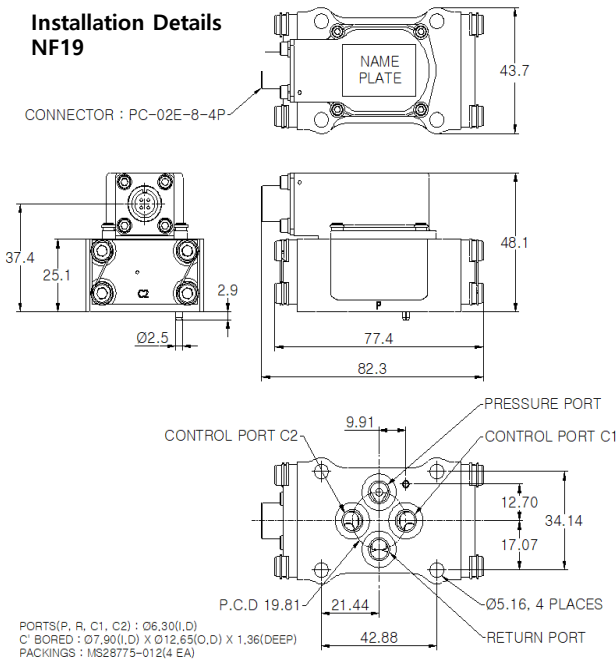
STANDARD SERIES NF19

Nozzle-Flapper Servo Valve

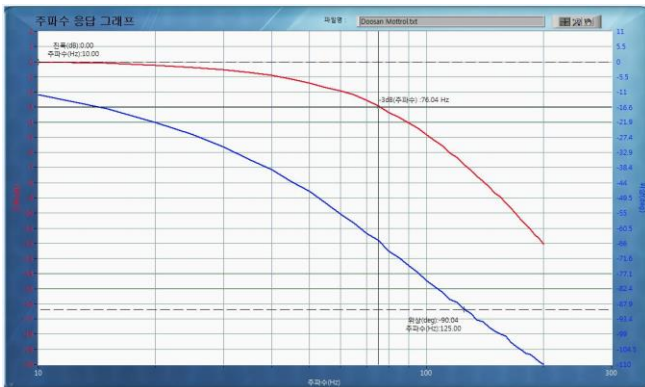


Installation Details NF19

CONNECTOR : PC-02E-8-4P



© Typical frequency response for Standard Series NF19 Servo valve shown below



- Specify rated control flow in GPM within limits of table
 - Lower rated flows available on special order
- Specify supply pressure from 500 to 4000psi to nearest 50psi
 - Lower and higher pressures available on special order

Supply Pressure (no load valve pressure drop) PSI	Range of No-Load Rated flow with MIL-PRF-83282			
	Minimum Value		Maximum Value	
	CIS	GPM	CIS	GPM
500	22	5.7	30	7.8
1000	30	7.8	42	11
1500	37	9.6	54	14
2000	42	11	62	16
2500	45	12	66	17
3000	49	13	73	19
3500	52	14	77	20
4000	60	16	85	22

- Refer to page 4 for the coil resistance
- Refer to page 4 for the connector or cable
- Cable location over R or P only choice for Series NF19

	Nominal Supply Pressure(psi)			
	500	1000	2000	3000
Maximum amplitude ratio	< 2db	< 2db	< 2db	< 2db
Frequency of 90° Phase Point	> 60Hz	> 80Hz	> 95Hz	> 110Hz

© Stock Series NF19(Part number NF19-S04)

- Supply pressure ----- 3000psi
- Rated flow ----- 73cis(19gpm) no-load
42cis(11gpm) at 1000psi valve drop
- O-rings ----- NBR
- Test fluid ----- MIL-PRF-83282
- Rated current ----- 10mA parallel
- Coil resistance ----- 400 ohms/coil
- Coil connection ----- Series coils
- Connector ----- Bendix PC-02E-8-4P
- Cable location ----- over return port