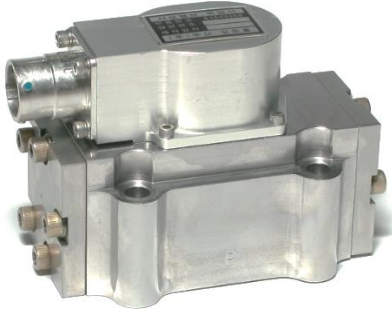


STANDARD SERIES

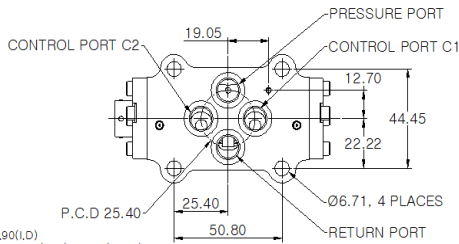
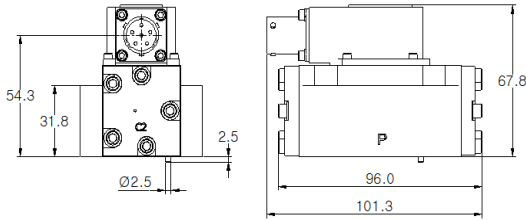
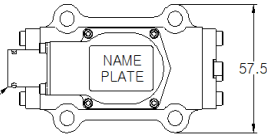
NF44

Nozzle-Flapper Servo Valve



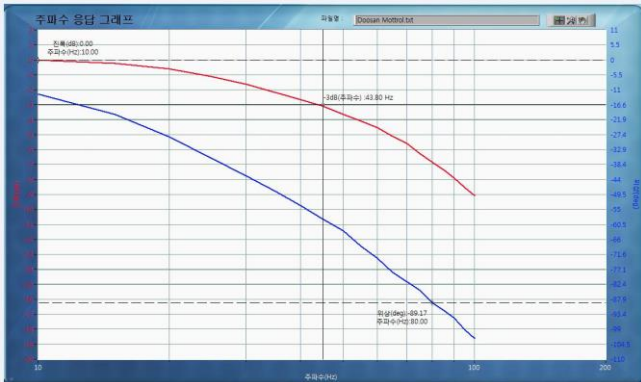
Installation Details NF44

CONNECTOR : M83723-79H1006N



PORTS(P, R, C1, C2) : Ø9.90(L.D)
C' BORED : Ø11.15(L.D) X Ø15.90(O.D) X 1.27(DEEP)
PACKINGS : MS28775-014(4 EA)

© Typical frequency response for Standard Series NF44 Servo valve shown below



- Specify rated control flow in GPM within limits of table
 - Lower rated flows available on special order
- Specify supply pressure from 500 to 4000psi to nearest 50psi
 - Lower and higher pressures available on special order

| Supply Pressure (no load valve pressure drop) PSI | Range of No-Load Rated flow with MIL-PRF-83282 | | | |
|--|--|-----|---------------|-----|
| | Minimum Value | | Maximum Value | |
| | CIS | GPM | CIS | GPM |
| 500 | 34 | 8.8 | 69 | 18 |
| 1000 | 46 | 12 | 100 | 26 |
| 1500 | 56 | 14 | 120 | 31 |
| 2000 | 61 | 16 | 139 | 36 |
| 2500 | 68 | 18 | 155 | 40 |
| 3000 | 73 | 19 | 170 | 44 |
| 3500 | 77 | 20 | 183 | 48 |
| 4000 | 84 | 22 | 196 | 51 |

- Refer to page 4 for the coil resistance
- Refer to page 4 for the connector or cable
- Cable location over R or P only choice for Series NF44

| | Nominal Supply Pressure(psi) | | | |
|------------------------------|------------------------------|--------|--------|--------|
| | 500 | 1000 | 2000 | 3000 |
| Maximum amplitude ratio | < 2db | < 2db | < 2db | < 2db |
| Frequency of 90° Phase Point | > 40Hz | > 55Hz | > 65Hz | > 80Hz |

© Stock Series NF44(Part number NF44-104)

- Supply pressure ----- 3000psi
- Rated flow ----- 170cis(44gpm) no-load
66cis(17gpm) at 1000psi valve drop
- O-rings ----- NBR
- Test fluid ----- MIL-PRF-83282
- Rated current ----- 10mA parallel
- Coil resistance ----- 1000 ohms/coil
- Coil connection ----- Individual coils
- Connector ----- Bendix PC-02E-8-4P
- Cable location ----- over return port